



SAMSUNG



THE QUIET COLOUR REVOLUTION

DigitAll *silence* CLP-500 SERIES COLOUR LASER PRINTERS

## INTRODUCING SAMSUNG COLOUR LASER PRINTERS.

At only 48 dB, Samsung CLP-500 series colour laser printers can make a major contribution to a quieter and calmer office environment.

5 colour, or 20 black and white, pages per minute make the Samsung CLP-500 series some of the fastest colour laser printers in their class.

Duplex (double sided) printing is standard on the Samsung CLP-500 series. One of many features that prove greater capability does not necessarily mean higher costs.

Up to 850 page maximum paper capacity and three-step toner change, to save time and effort that you would normally associate with colour printers.





## THE RIGHT PRINTER FOR EVERY JOB.



### Powerful Basics

The standard version CLP-500 provides a parallel port (P1284) and USB 2.0, a cassette for 250 pages, and a multi-purpose tray for specialised printing materials or up to 100 additional pages.



### Ethernet Network Card

An ethernet N/W card (wired) is standard on the CLP-500N/550N models, enabling printing from all compatible computers for maximum flexibility. (Option on CLP-500/550 models).



### Wireless Network Card

All four CLP 500, 550, 500N, and 550N models can be fitted with an optional converged wired / wireless N/W network card, to connect compatible wireless-LAN enabled computers.



### Additional Paper Tray

The standard 350 page paper capacity on every model can be increased to 850 pages with an additional paper tray.

With a Samsung CLP-500 series colour laser printer you will be prepared for anything. Whether you use the parallel ports, the ultra-fast standard USB 2.0, or the optional converged wired / wireless network card for cable-free connections, you'll be ready to go in an instant. The standard CLP-500 model can be equipped with a maximum RAM of 192 MB, while the CLP-550N can even be equipped with a memory up to 384 MB.

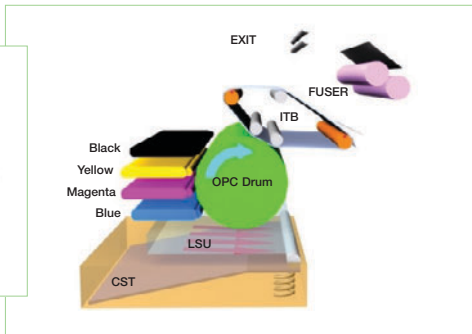
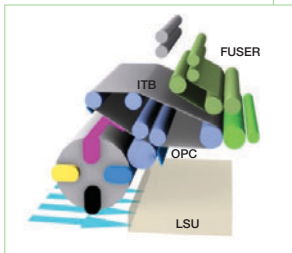
SO QUIET, YOU MAY THINK THEY'RE SWITCHED OFF.



Samsung CLP-500 series colour laser printers are so quiet, that you may not even notice when they're working. Samsung's revolutionary NO-NOIS® technology effectively simplifies the printing process. The result is an operating noise level of just 48 dB, and a calmer and quieter office. So you can concentrate on more important tasks than printing.

Conventional printing technology

In conventional colour laser printers, four bulky toner cartridges are held in a rotating magazine. This magazine continuously runs and stops, to render each of the CMYK toner cartridges on to the OPC drum. This creates much of the noise and vibration associated with regular colour laser printers.



NO-NOIS® Technology

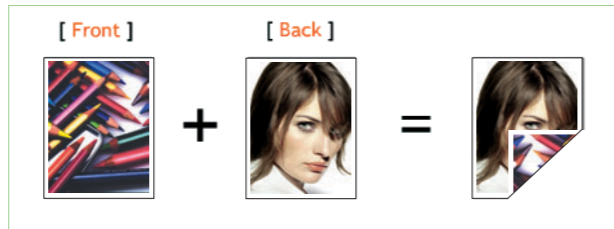
Thanks to Samsung's revolutionary Non Orbiting Noiseless Optical Imaging (NO-NOIS®) System, the new CLP-500 series printers are free from loud mechanical noise. The toner is stored in fixed cartridges that transfer colour on to the Image Transfer Band (ITB) in one simple step, via a smoothly rotating OPC drum. A technical innovation that soothes both ears and nerves.





## WHEN THE GOING GETS TOUGH.

If you expect a lot from your printers, then the new Samsung CLP-500 series is the printing solution you have been looking for. With 5 colour, or 20 black and white, pages per minute these printers are amongst the fastest in their class. Every model features a 350 page capacity, which can easily be increased to an amazing 850 page capacity. And a duplex function is included at no extra charge. While a multi-purpose tray for special print materials can handle overheads, envelopes, labels, and can even hold postcards.



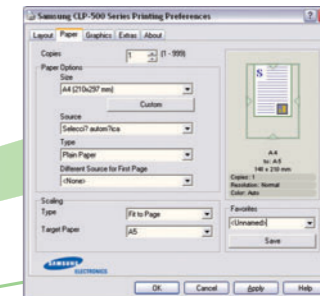


## IT'S AS EASY AS ONE, TWO, THREE.

Samsung colour laser printers are proof that leading-edge technology does not need to be complex to use. Changing the toner cartridges, for example, takes just three easy steps. And with just a couple of mouse-clicks, the user-friendly software will help produce outstanding business documents: booklets, multi-page posters, overheads, or even personalised paper with your own watermark. And servicing is just as simple. If you want to order new cartridges, or there is a technical question you need answered, simply contact our *service centre*. \* (insert local market details)



The large, clear LCD display allows you to check on the current printing status and adjust conditions. The error indicator on the left allows you to trace problems faster.



Samsung's user-friendly software for perfect business documents every time.

## WHEN ACCURACY IS WHAT COUNTS.



### Professional colour accuracy

All Samsung colour laser printers feature a unique IMAGIN® / ICC professional software package: a calibration system which guarantees maximum colour accuracy. The system is compatible with Microsoft ICM 2.0 and effectively re-calibrates the printer every time it is started, so what you see on the monitor is what you get on the printer.

Additionally it allows you to alter colour and contrast ratios manually to correct flaws in existing artwork. While Samsung's Tone Reproduction Curve (TRC) proprietary software manages toner consistency to guarantee the same result, from the start of a print run to the end.

### High Resolution Quality

In high-resolution mode, Samsung colour laser printers produce ultra crisp 1,200 dpi prints. But if speed and quantity should be more important, then the resolution can be reduced manually to 600 dpi.





## COLOUR WITHOUT THE CABLES.

If only everything was as simple as connecting a Samsung colour laser printer. Every model can be equipped with an optional converged wired / wireless N/W network card for maximum flexibility, without the cables. The Samsung CLP-500N and CLP-550N come equipped with a standard ethernet N/W (wired) network card, which allows quick installation to multiple workstations in your office. And for quick and easy direct connection to your desktop or laptop, every model features a lightning fast USB 2.0 and parallel port.



| Modell                   | CLP-500  | CLP-500N   | CLP-550  | CLP-550N   |
|--------------------------|--|--|--|--|
| Engine                   |  |  |  |  |
| FPOT                     |  | 15 sec(Black), 24 sec(Color)   |  |  |
| Speed(ppm)               |  | 20 PPM(Black), 5 PPM(Color)  |  |  |
| Max. Paper Size          |  | 8.5x14 inch  |  |  |
| Resolution               | 1200 dpi class   | 1200 dpi class   | 1200 dpi class   | 1200 dpi class   |
| Noise(dB)                |  | 48dB in color printing   |  |  |
| Weight (with cons.)      |  | 32 Kg (70.5lb)   |  |  |
| Demension (W*D*H)        |  | 510 mm x 467 mm x 405 mm ( 20.1" x 18.4" x 15.9 ")   |  |  |
| Control                  |  |  |  |  |
| Processor                | Samsung SPGPm  | Samsung SPGPm  | PPC 603e - 266MHz  | PPC 603e - 266MHz  |
| Ram (Std.)               | 64 MB  | 64 MB  | 64 MB  | 128 MB   |
| Ram (Max.)               | 192 MB   | 192 MB   | 320 MB   | 384 MB   |
| Emulation                | SPL-C  | SPL-C  | PS3, PCL6, SPL-C   | PS3, PCL6, SPL-C   |
| Resident fonts           | -  | -  | 136 PS3, 45 PCL5CE   | 136 PS3, 45 PCL5CE   |
| Standard Interface       | USB 2.0, IEEE1284 Parallel,                                    | USB 2.0, IEEE1284 Parallel, 10/100 Base TX   | USB 2.0, IEEE 1284 Parallel                                    | USB 2.0, IEEE 1284 Parallel, 10/100 Base TX                    |
| Optional Interface       | 10/100 Base TX,<br>10/100 Base TX +<br>802.11 b Wireless LAN   | 10/100 Base TX +<br>802.11 b Wireless LAN  | 10/100 Base TX +   | 10/100 Base TX +<br>802.11 b Wireless LAN                      |
| Os Compatibility         | Win 9X, NT4.0, Me, 2000, XP,<br>Linux OS, Mac OS 8.6 or higher | Win 9X, NT4.0, Me, 2000, XP,<br>Linux OS, Mac OS 8.6 or higher   | Win 9X, NT4.0, Me, 2000, XP,<br>Linux OS, Mac OS 8.6 or higher | Win 9X, NT4.0, Me, 2000, XP,<br>Linux OS, Mac OS 8.6 or higher |
| Paper Handling           |  |  |  |  |
| Paper Input (Capa./Type) |  | 250-sheet Cassette, 100-sheet Multi-purpose Feeder   |  |  |
| Paper Output             |  | 250 Sheets Face down, Built-in Duplex (Both sided printing)  |  |  |
| Options (Input/Output)   |  | 500-sheets Second Cassette   |  |  |
| Supporting Sheet Size    |  | Cassette : A4/Letter<br>Multi-purpose Feeder : Postcard(3.5x5.5 inch) - Legal<br>Duplex : A4/Letter  |  |  |
| Supporting Media Range   |  | Cassette : Plain Paper<br>Multi-purpose Feeder : Transparencies, Envelopes, Labels, Card Stock   |  |  |
| Others                   |  |  |  |  |
| Consumable Yield         |  | Black toner : 7,000 sheets @5% (Starter : 2,000 sheets)<br>CMY toner : 5,000 sheets @5% (Starter : 1,500 sheets)<br>Drum : 50,000 images (12,500 Color)<br>ITB : 50,000 images (12,500 Color)<br>Waste Toner : upto 12,000 mono pages @ 5% |  |  |
| Power Consumption        |  | 450 watts (printing), 45 watts (idle)  |  |  |





**SAMSUNG Electronics GmbH**  
Am Kronberger Hang 6  
65824 Schwalbach/Taunus  
<http://www.samsung.de>  
Info: 01805-12 12 13\*  
Fax: 01805-12 12 14\*  
\*0,12 €/Min.

