

ScanFront 300/300P Specifications

Type	Sheetfed type network scanner
Document feeding	Automatic sheet feeding
Document size	Width: 50.8 - 216 mm (2 - 8.5 in.) Length: 53.9 - 355.6 mm (2.1 - 14 in.)
Document thickness and weight	Continuous Feeding: 14 - 57 lb bond (52 - 209 g/m ²)(0.06 - 0.25 mm) Manual Feeding: 11 - 57 lb bond (40 - 209 g/m ²)(0.05 - 0.25 mm)
Card size and thickness	Size: 53.9 x 85.5 mm (2.12 x 3.37 in.) Thickness: no more than 0.76 mm (0.03 in.), cards with embossed letters are supported
Feeding capacity	Up to 50 sheets of good quality paper or up to 4.8 mm (0.19 in.) high (maximum)
Scanning element	1-line CMOS CIS
Light source	LED (red, green, and blue)
Scanning side	Simplex/Duplex
Scanning modes	Black and White, Error Diffusion, Advanced Text Enhancement II 256-level Grayscale 24-bit Color
Scanning resolutions	100 x 100 dpi, 150 x 150 dpi, 200 x 200 dpi, 300 x 300 dpi, 400 x 400 dpi, 600 x 600 dpi
Scanning speed	B&W ScanFront 300: 30 ppm (Simplex), 60 ipm (Duplex); ScanFront 300P: 30 ppm (Simplex), 60 ipm (Duplex)
(A4/LTR, Vertical, 200 dpi)	Grayscale ScanFront 300: 30 ppm (Simplex), 56 ipm (Duplex); ScanFront 300P: 30 ppm (Simplex), 60 ipm (Duplex)
	Color ScanFront 300: 25 ppm (Simplex), 25 ipm (Duplex); ScanFront 300P: 25 ppm (Simplex), 40 ipm (Duplex)
Useful functions	Ultrasonic Double Feed Detection (ScanFront 300P only), Automatic Page Size Detection, Deskew, Skip Blank Page, Color Dropout/Enhance Color, Text Orientation Recognition, Remove Bleed-Through, Folio, Automatic Color Detection, Long Document Scanning
Operation panel	8.4 inch TFT Liquid Crystal Display with Touch Panel
Fingerprint sensor	Optical Sweep Type Sensor (ScanFront 300P only)
Interface	Hi-Speed USB 2.0 x 4, LAN 10BaseT/100BaseTX connector (with LED to show connection)
Power requirements	AC100 - 120V (50/60Hz), AC200 - 240V (50/60Hz)
Power consumption	29W (Scanning), 1W (Sleep mode)
Operating environment	10 - 32.5°C (50 - 90.5°F), Humidity: 20 - 80% RH
Dimensions (W x D x H)	Feed trays closed: 310 x 161 x 215 mm (12.2 x 6.3 x 8.5 in.)
Weight	Approx. 3.5 kg (7.7 lb.), excluding AC adapter
Options/Consumables	Exchange Roller Kit

Specifications are subject to change without notice.

■ Improved maintenance

The body cover of ScanFront 300/300P opens wide for easy recovery actions, such as when removing paper jams, and easy maintenance. An Exchange Roller Kit (sold separately) is available for replacing worn rollers and can be installed yourself – no service technician is needed.

■ Energy efficiency

This device meets the ENERGY STAR Program guidelines for energy efficiency, meaning it requires less energy and costs less to run.



ENERGY STAR and the ENERGY STAR mark are registered U.S. trademarks.

Other company names and product names appearing in this brochure are the registered trademarks and/or trademarks of their respective owners.

Company names and product names appearing in this brochure are the registered trademarks and/or trademarks of their respective owners.

Canon

CANON AUSTRALIA PTY LTD

1 Thomas Holt Drive, North Ryde, Sydney, NSW 2113, Australia Tel: 13 13 83

www.canon-elec.co.jp

CANON U.S.A. INC.
New York Office/Headquarters: One Canon Plaza, Lake Success, NY 11042, U.S.A. Tel: (516) 328-5000
CANON CANADA, INC.
Toronto Office/Headquarters: 6390 Dixie Road, Mississauga, Ontario L5T 1P7, Canada Tel: (905) 795-1111
CANON EUROPA N.V.
Bovenkerkerweg 59-61 1185 XB Amstelveen The Netherlands Tel: (020) 545-8545
CANON LATIN AMERICA, INC.
703 Waterford Way, Suite 400, Miami, Florida 33126, U.S.A. Tel: (305) 260-7400
CANON NEW ZEALAND PTY LTD
Akoranga Business Park, Akoranga Drive, Northcote, Auckland, New Zealand Tel: 0800 222 666
CANON SINGAPORE PTE. LTD.
1 Harbour Front Avenue, #04-01 Keppel Bay Tower, Singapore 098632 Tel: (65) 6799-8888
CANON HONGKONG COMPANY LTD.
19th Floor, The Metropolis Tower, 10 Metropolis Drive, Hung Hom, Kowloon, Hong Kong Tel: (852) 3191-2388
CANON KOREA BUSINESS SOLUTIONS INC.
168-12 Samseong-Dong, Gangnam-gu, Seoul, Korea Tel: (02) 3450-0700

Canon



imageFORMULA

ScanFront 300/300P

NETWORK SCANNER



Make it count.

Make it quick.



Speedily Get Your Scans to the Network and Where They Belong

Incorporating the finest features available for network document scanners, the ScanFront 300/300P collects high scanning speeds, image-processing and distribution functions, and the simple-to-use ScanFront Administration Tool in a small but sturdy device.

Impeccable scanning speed and quality, made simple and secure.



In a class by themselves, document scanners from Canon continue to lead the way with innovative technology that effectively scans and shares documents for keeping your business up with the ever-increasing speed of commerce. Canon's latest ScanFront 300/300P is an A4-size color duplex network scanner that boasts impressive scanning speeds, a compact yet robust design, a list of image processing and network sending functions, and ScanFront Administration Tool for managing multiple devices. Two distinct devices, ScanFront 300 is the Standard version to ScanFront 300P's Professional version, which has enhanced scanning speeds, Ultrasonic Double Feed Detection, and fingerprint authentication.

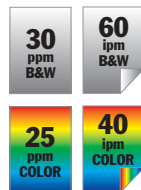


ScanFront 300

Workflow-improving features

High speed scanning

ScanFront 300/300P obtains exceptional scanning speeds, even with full-color documents, using parallel data transfer with a 1-line CMOS sensor and a new advanced CPU for faster processing.



ScanFront 300P, A4/LTR, 200dpi

Compact and robust

The ultra-compact body size of ScanFront 300/300P allows for easy placement in limited spaces, while its robust design is sturdy and strong. Rigid trays for both feeding and output fold inward to protect the screen when not in use.

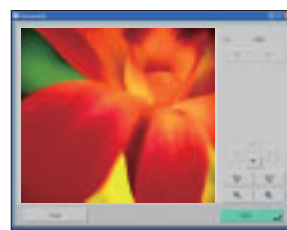
Four USB ports

Four convenient USB ports provide suitable places to affix keyboards, a mouse, or USB memory. One port placed at the front right of the body ideally simplifies Scan To USB Memory execution.



Easy operation

Excellent visibility with the wide 8.4-inch SVGA (800x600) high-definition touch screen allows you to have a better view of control keys and post-scan documents.



Enhanced scanning functions

In addition to the already impressive line-up of image processing functions available with earlier models, ScanFront 300/300P adds such convenient functions as Auto Color Detection, Folio mode, and Long Document Scanning mode.

Network sending functions

Expanding the options for distributing throughout your network, a few simple steps are all it takes for ScanFront 300/300P to scan and share documents to PC folders, e-mail addresses, FTP servers, USB memory, and now even printers and faxes.



Scan To Mail

Send scanned images to a designated e-mail address, with a customizable subject line and message.

Scan To FTP

Send scanned images to a specific folder on an FTP server.

Scan To Fax

Send scanned documents to FAX service providers via e-mail.

Scan To Printer

Scan and print directly to printers connected to and shared by your server.

Scan To USB Memory

Send scanned images to USB memory inserted to a USB slot.

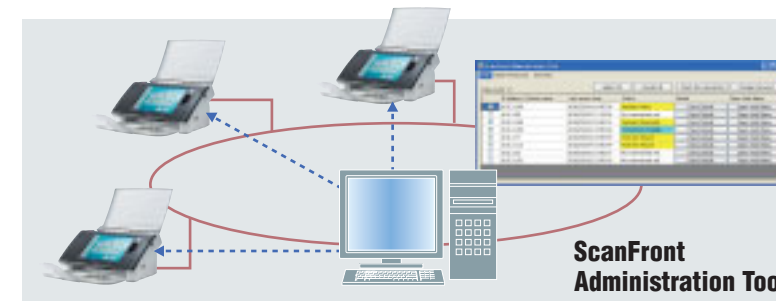
Scan To Folder

Send scanned images to a shared folder on the network, including network-attached storage systems.

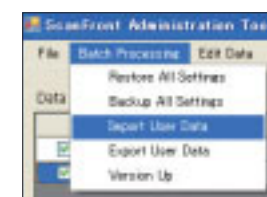
Improve your network capabilities

ScanFront Administration Tool

One window on your PC now provides the integrated device management capability for an administrator to maintain multiple scanners. From ScanFront Administration Tool you have the ability to register, backup, or restore devices to be managed, as well as change passwords, monitor connection status and access history, check details, and manage registered users of several machines simultaneously.



With ScanFront Administration Tool, an administrator can manage more than one ScanFront 300/300P and execute the following batch processes to several at the same time:



- Restore all device settings from backup data
- Create backup data of all device settings
- Add user accounts from backup data
- Create backup data of user accounts
- Upgrade software

Fingerprint authentication*

Not even an activation button has to be pressed. If you have a User account on the device, simply sweep your finger over the sensor to gain access. Up to 100 users can be registered to a device.



*This feature is available only with ScanFront 300P.

Index file creation

ScanFront 300/300P can create and send a customized index file at the same time as image file creation and distribution when sending with the Scan To Folder or Scan To FTP functions. This index can simplify file sorting and retrieval.

SCANFRONT SDK COMING SOON*

ScanFront 300/300P will support two types of SDK for customizing the embedded software. **Add-in SDK** allows you to develop unique processes at specific times in the standard operation sequence of the software. **UI Customization Tool** can change the background and button images on the menu, Home, or Job screens for a different look and feel to your UI.

*ScanFront SDK will be available 2010 or later.



ScanFront 300

ScanFront 300P