

Turn all your printers into copiers, with great performance and versatility

## Full-featured MFP solutions



### Small footprint with high performance

Turn any new or existing printer into a copier, giving the small footprint you need without compromising on performance and versatility.

MFP Repro is a full-featured solution for scanning, copying, sharing and enhancing. You get outstanding image quality, with real-time view of enhancements and automatic cleanup of faded, dirty, or poorly shaded documents. Built-in workgroup collaboration capabilities mean anyone can scan to email, scan to folder, and share the scanner with others.

Contex solutions fit any environment, like copying, printing and scanning in the office as well as in copy shops.

A Contex MFP Repro bundle includes a scanner, intuitive Nextimage REPRO software for scanning and copying, and a high stand. Also available with low stand for side-by-side solutions.



SD 36 MFP Repro



IQ Quattro 24 MFP Repro



IQ Quattro 44 MFP Repro



Low stand version available for side-by-side

	IQ Quattro 24 MFP Repro	IQ Quattro 44 MFP Repro	SD 36 MFP Repro
<b>High-stand version<sup>1</sup></b>			
Settings	Right or left side touch-screen mounting Supported printer height from 995 to 1195 mm in 25 mm increments (39.2 to 47 inches in about 1 inch increments)		
Designed to fit <sup>1</sup>	HP DesignJet T-series, Z-series, and 500/800 series. Canon iPF 600/700/900 series. EPSON SC-T series. See full list of supported printers at <a href="http://www.contex.com/MFP-Repro">www.contex.com/MFP-Repro</a>		
<b>Low-stand version (Side-by-side)</b>			
Settings	Right or left side touch-screen mounting Working Height 834 / 859 / 884 mm (32.8 / 33.8 / 34.8 inches)		Right or left side touch-screen mounting. Working Height 821 / 846 / 871 mm (32.3 / 33.3 / 34.3 inches)
Additional printers, side-by-side	EPSON STYLUS PRO, Océ, Mutoh and some HP printers. See full list at <a href="http://www.contex.com/MFP-Repro">www.contex.com/MFP-Repro</a>		
<b>Scanner Specifications</b> (See remaining specifications for the scanner under the product series)			
200 dpi RGB Color speed	2 inch/sec	2 inch/sec	1.5 inch/sec
Upgradable	Yes	Yes	Yes
200 dpi Grayscale / Monochrome	14 inch/sec	14 inch/sec	10 inch/sec
Maximum Scan Width	24 inch (610 mm)	44 inch (1118 mm)	36 inch (914 mm)
Maximum Media Width	26.6 inch (676 mm)	47 inch (1194 mm)	38 inch (965 mm)
Optical Resolution	1200 dpi	1200 dpi	600 dpi
Maximum Resolution	9600 dpi	9600 dpi	600 dpi
Technology	Contex CleanScan CIS	Contex CleanScan CIS	Contex Unibody CIS design
Contex SIGMA <sup>2</sup>	•	•	•
Contex CFR <sup>3</sup>	•	•	•
Maximum Media Thickness	0.08 inch (2 mm)	0.08 inch (2 mm)	0.08 inch (2 mm)
Accuracy	0.1% +/- 1 pixel	0.1% +/- 1 pixel	0.1% +/- 1 pixel
Data Capture (color/mono)	48-bit / 16-bit	48-bit / 16-bit	48-bit / 16-bit
Color Space	Adobe RGB, sRGB, Device RGB	Adobe RGB, sRGB, Device RGB	sRGB
Energy Star Certified	•	•	•
Power Requirements	100 – 240V, 60/50Hz, 18W	100 – 240V, 60/50Hz, 23W	100 – 240V, 60/50Hz, 25W
Weight	16.1 Kg (35.5 lbs)	27 kg (59.5 lbs)	21.1 kg (46.5 lbs)
Dimensions (LxWxH)	32.4 x 32.4 x 18.9 x 6.3 inches (82.4 x 48.0 x 16.1 cm)	53.1 x 18.9 x 6.3 inches (135.0 x 48.0 x 16.1 cm)	45.6 x 12.9 x 5.5 inches (115.9 x 32.7 x 14 cm)
Certifications/compliance	CE, cUL, Customs Union, Ukr, FCC Class A, RoHS, VCCI, and ENERGY STAR Certified	CE, cUL, Customs Union, Ukr, FCC Class A, RoHS, VCCI, and ENERGY STAR Certified	CE, cUL, Ukr, KC, BSMI, VCCI, FCC Class A, RoHS, and ENERGY STAR Certified

<b>Touch-screen and PC platform</b>	
Touch Screen	17" TFT active matrix LCD / 1280 x 1024 pixels
PC Platform for CPU	Max PC size/weight: 490x400x107mm, 12kg (19.3x15.7x4.21in, 26lbs.)
Recommended PC	"Slimline" desktop PC, 2.0GHz Intel Core 2 Duo or faster. 2GB RAM

<b>Full Featured Nextimage REPRO Software</b>	
Language versions	Chinese, Dutch, English, French, German, Italian, Japanese, Korean, Polish, Russian, Spanish
Operating system	32 and 64-bit: Windows 10, 8, Windows 7 and Vista
File formats	Multi-page PDF or TIF files. TIF, JPG, PDF, PDF/A, DWF, CALS, BMP, JPEG-2000(JP2), JPEG2000 Extended(JPX), TIF-G3, TIF-G4, others
Features	Scan to Email / Copy / File

1 Not all supported printers will fit under the high stand, but can be used side-by-side.  
 2 Signal Intensity Matching (SIGMA) is a Contex Patent. Sensor heating during a scan can cause inhomogeneous images. Thanks to Contex innovative thinking, our IQ Quattro and SD scanners will minimize sensor differences LIVE during a scan.  
 3 Contex applications create industry standard raster file formats that can be used in any CAD or GIS application.

All trademarks remain the property of their respective holders, and are used only to directly describe the product being provided. Their use in no way indicates any relationship between Contex A/S and the holders of the said trademarks.

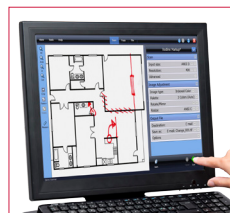
## Full-featured scanning and copying touch screen solution with professional image controls



Copy to unlimited number of printers via network or USB



Awarded Nextimage software to ensure image quality for both archival and printing



Standard Windows application or intuitive touch-screen mode



A good ergonomic environment for left- as well as right-handed operation

**Contex Head Office**  
 Phone: +45 4814 1122  
[info@contex.com](mailto:info@contex.com)

**Contex Americas**  
 Maryland, USA  
 Phone: +1 (703) 964 9850  
[salesamericas@contex.com](mailto:salesamericas@contex.com)

**Contex EMEA & AP**  
 Copenhagen, Denmark  
 Phone: +45 4814 1122  
[emea-ap@contex.com](mailto:emea-ap@contex.com)

**Contex Singapore**  
 Phone: +65 6853 8129  
[apac@contex.com](mailto:apac@contex.com)

**Contex China**  
 Shanghai  
 Phone: +86 21 6422 2525  
[info-china@contex.com](mailto:info-china@contex.com)

**Contex Japan**  
 Tokyo  
 Phone: +81 3 3669 5515  
[info-japan@contex.com](mailto:info-japan@contex.com)



Read more at [contex.com](http://contex.com)



Contex solutions work with all leading large-format printers. For full list, see [www.contex.com](http://www.contex.com)

