

imagePROGRAF PRO-300

TECHNICAL SPECIFICATIONS



Canon

imagePROGRAF PRO-300

Professional A3+ printer
in a space-saving design



10 PIGMENT INKS

Produces a very wide gamut of colour and tone, smooth gradations and excellent detail in the shadows.



HIGH SPEED PRINTING

Approximately 4 minutes and 15 seconds to create a high quality A3 colour print with a border.



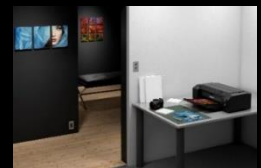
SPACE-SAVING DESIGN

The iPF PRO-300 A3+ printer realises a smaller 639×368×196.5mm footprint and takes up less space in your home and work space compared to other professional printers.



GET CREATIVE WITH PRINTS

Supports a variety of paper sizes to help broaden creativity. E.g. borderless printing for all types of media, panorama size paper 594mmx210mm, user-defined long sizes up to 990.60mm.



ACCURATE PAPER FEEDING

The iPF PRO-300 comes complete with a skew correction function to guarantee that all types of paper, including thick paper, are printed without misalignment.



What inks can I use with my printer?

300 MBK	300 PBK	300 GY	300 C	300 PC	300 M	300 PM	300 Y	300 R	300 CO
MBK Yield 4x6: 1,750 A3+: 270	PBK Yield 4x6: 303 A3+: 33	G Yield 4x6: 236 A3+: 44	C Yield 4x6: 735 A3+: 82	PC Yield 4x6: 625 A3+: 116	M Yield 4x6: 785 A3+: 87	PM Yield 4x6: 530 A3+: 73	PM Yield 4x6: 530 A3+: 87	R Yield 4x6: 920 A3+: 129	CO Yield 4x6: 272 A3+: 48

GENERAL FEATURES	
Model	PRO-300
Ink Type	Pigment 10 colors LUCIA PRO ink
Maximum Print Resolution	4800 (horizontal) ² x 2400 (vertical) dpi
Size	Approx. 639 x 379 x 200 mm Approx. 25.2 x 15 x 7.9 inch
Weight	Approx. 14.4 kg Approx. 31.6 lbs
Display	3.0 inch / 7.5cm LCD (Display Panel, Colour)
Interface	USB / Wired LAN / Wi-Fi / PictBridge (Wi-Fi)
Input Power	AC 100 -240 V 50 /60 Hz
PRINT SPEED	
Colour / Bordered printing / A3+ Canon Photo Paper Pro Platinum	Approx. 255 sec.
POWER CONSUMPTION	
Standby (scanning lamp is off) USB connection to PC	Approx. 1.0W
OFF	Approx. 0.2W
Printing USB connection to PC	Approx. 16W
Standby (all ports connected, scanning lamp is off)	Approx. 2.4W
ENVIRONMENT	
Operating Environment ^{*24}	Temperature: 5~35°C Humidity: 10~90 %RH (no dew condensation)
Recommended Environment ^{*25}	Temperature: 15~30°C Humidity: 10~80 %RH (no dew condensation)
Storage Environment	Temperature: 0~40°C Humidity: 5~95 %RH (no dew condensation)
ACOUSTIC NOISE (PC PRINT)	
Photo Paper Pro Platinum (PT-201) (L,Color,borderless)	Approx. 39.5dB(A)
Photo Paper Pro Platinum (PT-201) (4x6,Color, borderless)	Approx.39.2dB(A)
PRINT HEAD / INK	
Type	Permanent
Number of Nozzles	Total 7,680 nozzles (Y / M / C / R / PC / PM / Gy / PBk / MBk / CO / each 768 nozzles x 10)
Ink Tank	10 - colour = 9 -colour(Y / M / C / R / PC / PM / Gy / PBk / MBk)+CO
MAXIMUM PRINTABLE PAPER LENGTH	
Top Tray	Top Tray : 322.2 mm (12.7 inch), Borderless Printing: 329 mm(A3+) (13 inch)
Manual Feed	Manual Feed : 323.4 mm(12.7 inch), Borderless Printing: 330.2 mm (13 inch)
PRINTABLE AREA	
Borderless Printing	Top / Bottom / Right / Left margin: each 0 mm
Bordered Printing	Top margin: 3 mm, Bottom margin : 5 mm/ Left / Right margin: each 3.4 mm (LTR / LGL: Left: 6.4 mm, Right: 6.3 mm) Recommended Top / Bottom / Right / Left margin for Fine Art Paper: each 25mm

SUPPORT MEDIA	
Top Tray	Plain Paper / Photo Paper Pro Platinum (PT-101) / Photo Paper Plus Glossy II (PP-201/PP-301) / Photo Paper Pro Luster (LU-101) / Photo Paper Plus Semi-gloss (SG-201) / Matte Photo Paper (MP-101) / Photo Stickers(PSHRS) / Hagaki / Lightweight Photo Paper (BOX) / Japanese Paper Washi (BOX) / Canvas (BOX)/ Red Label Superior 80 g/m2(WOP111) / Canon Océ Office Colour Paper 80 g/m2(SAT213) / Heavyweight Fine Art Paper(BOX) / Inkjet Greeting Card / Cardstock
Manual Feed	Photo Paper Pro Platinum (PT-101) / Photo Paper Plus Glossy II (PP-201/PP-301) / Photo Paper Pro Luster (LU-101) / Photo Paper Plus Semi-gloss (SG-201) / Matte Photo Paper (MP-101) / Lightweight Photo Paper (BOX) / Heavyweight Photo Paper (BOX) / Japanese Paper Washi (BOX) / Canvas (BOX) / Photo Paper Pro Premium Matte (PM-101) / Heavyweight Fine Art Paper (BOX) / Extra Heavyweight Fine Art Paper (BOX) / Highest Density Fine Art Paper (BOX) / Premium Fine Art Smooth(FA-SM) / Premium Fine Art Rough / Baryta Paper(BOX) / Inkjet Greeting Card / Cardstock
Multi-purpose Tray	Printable Nail Sticker (NL-101) / Printable Disk
PAPER SIZE	
Top Tray	A3+ / A3 / A4 / A5 / B4 / B5 / LTR / LGL / Ledger / Hagaki / 7"x10"/12"x12" L(3.5"x5") / KG(4"x6") / 2L(5"x7")/8"x10"/10"x12" Square (127 mm/210x594 mm) Custom size (width 89 mm - 330.2 mm length 127 mm - 990.6 mm)
Manual Feed	A3+ / A3 / A4 / B4 / LTR / LGL / Ledger / 12"x12" 8"x10" / 10"x12" / 210x594 mm Custom size (width 89 mm - 330.2 mm length 127 mm - 990.6 mm)
Multi-purpose Tray	120 x 120 mm
PAPER WEIGHT	
Top Tray	Plain Paper : 64-105 g/m2 Canon Genuine paper (maximum) : approx. 380 g/m
Manual Feed	Canon Genuine paper (maximum) : approx. 380 g/m, or Paper Thickness 0.1 ~0.6 mm or less

*2: Ink droplets can be placed with a pitch of 1/4800 inch at minimum.

*24: The performance of the printer may be reduced under certain temperature and humidity conditions.

*25: For the temperature and humidity conditions of papers such as photo paper, refer to the paper's packaging or the supplied instructions.

Canon

www.canon.com.au