

OmniLink® TM-m30II-h POS Receipt Printer



Receipt Printer

POS

Compact receipt printer with advanced connectivity and peripheral support.

USB POS peripheral device support — accommodates up to four POS peripherals

USB-Network-Tethering¹ — provides network connectivity from the printer to a tablet

Modern industrial design — sleek 3" thermal receipt printer; ideal for compact spaces

Broad connectivity, including charging and data communication² — multiple interface options include USB, Ethernet, Bluetooth® and wireless (802.11b/g/n/ac)

Online ordering ready — Server Direct Print technology enables the printer to retrieve data from the Internet

Compatible with cloud applications — via OmniLink Merchant Services

Fast receipt printing — speeds up to 250 mm/sec

Remarkable printer reliability — 150 km printhead life³ and auto cutter life of 2.2 million cuts³

Paper-saving functions — reduce paper usage by up to 30 percent⁴

2-year limited warranty — service and support you can count on

Print

Print Method Thermal
Print Speed 250 mm/second
Print Resolution 203 dpi
Print Direction Vertical and horizontal

Print Fonts

Fonts/Column Capacity Font A: 12 x 24 48 cpl (default); Font B: 10 x 24 57 cpl; Font C: 9 x 17 64 cpl, Kanji Font A: 24 x 24 24 cpl; Kanji Font B: 20 x 24 28 cpl (Japanese), 36 cpl (Korean)
Character Size Font A: 1.25 x 3.00 mm; Font B: 1.13 x 3.00 mm; Font C: 0.88 x 2.13 mm; Kanji Font A: 2.50 x 3.00 mm; Kanji Font B: 2.26 x 3.00 mm
Character Set 95 Alphanumeric, 18 International, 128 x 43 Graphic, Japanese (11,233 characters of JIS X0213:2004, 1 special character), Simplified Chinese (28,553 characters of GB18030-2000), Traditional Chinese (13,535 characters of Big5), Korean (8,366 characters of KSC5601)
Barcode UPC-A, UPC-E, JAN8 / EAN8, JAN13 / EAN13, Code39, Code93, Code128, ITF, CODABAR (NW-7), GS1-128, GS1 DataBar, Code 128 Auto
Two-dimensional Symbol Printing PDF417, QR Code, MaxiCode, DataMatrix, Aztec Code, Two-dimensional GS1 DataBar, Composite Symbology

Media Handling

Media Dimensions 80 mm: 79.5 ± 0.5 x 83 mm
 3.13" ± 0.02" (width) x 3.27" (roll diameter)
 58 mm: 57.5 ± 0.5 x 83 mm
 2.26" ± 0.02" (width) x 3.27" (roll diameter)
 Thickness 48 – 80 µm
Type Thermal roll paper
Paper Feed Method Friction feed
Paper Back Feed Yes
Width 3.12"/79.5 mm
Paper Loading Drop-in
Roll Diameter (Max) 3.27"/83 mm
Core Diameter (Min) 0.71"/18 mm
Paper Guide Yes
Auto Cutter Yes

Connectivity

Interface (Ethernet model) Built-in USB-Type-B (USB 2.0, Full-speed) + Ethernet 10/100Base-T/TX + 1 x USB-Type-A (Device Charging Port: 2.1A) + 3 x USB-Type-A (Standard)
Interface (Bluetooth model) USB-Type-B (USB 2.0, Full-speed) + Bluetooth 3.0 (EDR supported) + Ethernet 10/100Base-T/TX + 1 x USB-Type-A (Device Charging Port: 2.1A) + 3 x USB-Type-A (Standard)
Interface (Wireless model) USB-Type-B (USB 2.0, Full-speed) + 802.11b/g/n or 802.11b/g/n/ac + Ethernet 10/100Base-T/TX + 1 x USB-Type-A (Device Charging Port: 2.1A) + 3 x USB-Type-A (Standard)

Connectivity (Continued)

Wireless Security Mode WPA-PSK(AES), WPA2-Personal/Enterprise
Supported Operating Systems iOS[®], Android[™], Windows[®], Mac[®] OS X[®], GNU (Linux)
Easy Setting Function NFC³, QR code, Simple AP (Wireless model only)
Easy Setting Tool TM Utility (iOS, Android), TM-m30II Utility (Windows), EpsonNetConfig, TM Bluetooth Connector

Reliability³

Printer Reliability 17 million printing lines
 MTBF 360,000 hours
 MCBF 65,000,000 lines
Auto Cutter Reliability 2.2 million cuts

General

NV Bit Image Memory 12KB (max)
NV Graphics 384KB (max)
Receive Buffer 4KB or 45byte
Development Kit Epson[®] ePOS[™] SDK (iOS, Android, JavaScript), TM Print Assistant (iOS, Android), OPOS ADK/OPOS ADK for .NET (Windows), JavaPOS ADK (Windows, Linux)
Drivers Epson Advanced Printer Driver (APD), TM Virtual Port Driver, Mac Printer Driver, CUPS Driver
Other Tools Deployment Tool, Monitoring Tool, TM-m30II Firmware Updater
Software TM Utility (iOS, Android), TM-m30II Utility (Windows Desktop), EpsonNet Config (Win, Mac), TM Bluetooth Connector, Deployment Tool, Monitoring Tool
Audible Alert Optional External Buzzer (OT-BZ20)
LED Indicators Orange LEDs – Error, Paper Out; Blue LEDs – Power, Wi-Fi[®], Ethernet, Bluetooth
Sensors Paper End, Cover Open, Near-end Sensor (Select SKUs)
D.K.D. Function Yes
Power Consumption Operating 32.8 W, Standby 1.6 W (AC115 V/60 Hz)
Power Source Adapter PS-180
Power Saving Yes
Temperature 5 °C to 45 °C
Relative Humidity 10 – 90%
Acoustic Noise Level 55 db
Standards and Approvals EMI FCC Class A, ICES-003 Class A Safety Standard UL62368-1/CSA C22.2 No.62368-1
Dimensions (W x D x H) 5" x 5" x 5"
 127 x 127 x 135 mm
Weight 2.87 lb/1,300 g
Color ENB9 (Epson White), EBCK (Epson Black)
Cash Drawer Kick Yes

General (Continued)

USB-Network-Tethering¹ Yes
Smart Device Charging Yes (2.1 A)
Data Communication iOS and Android²
USB POS Peripheral Device Support Up to 4

Eco Features

Paper-saving Mode
 Power-saving Mode
 ENERGY STAR[®] qualified (select SKUs)
 RoHS compliant
 Recyclable product⁶
 Epson America, Inc. is a SmartWay[®] Transport Partner⁷

Warranty

Standard 2-year limited warranty; optional extended warranty available

What's in the Box

OmniLink TM-m30II-h, Power Supply - Adapter PS-180 with AC Cable, Power Switch Cover, Roll Paper (for checking initial movement of the printer), Setup Guide, 58 mm Roll Paper Guide

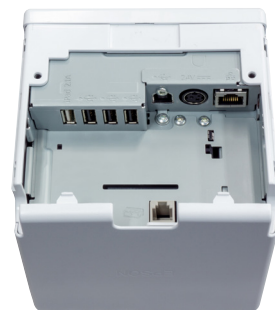
Ordering Information

| Model Number | Interfaces | Color* | Part Number |
|--------------|------------|--------|--------------|
| TM-m30II-h | Bluetooth | ENB9 | C31CH92011 |
| TM-m30II-h | Bluetooth | EBCK | C31CH92012 |
| TM-m30II-h | Ethernet | ENB9 | C31CH92021 |
| TM-m30II-h | Ethernet | EBCK | C31CH92022 |
| TM-m30II-h | Wireless | ENB9 | C31CH92A9991 |
| TM-m30II-h | Wireless | EBCK | C31CH92A9981 |

* ENB9: Epson White, EBCK: Epson Black

| Accessories | Part Number |
|------------------------|-------------|
| Wall Mounting Brackets | OT-WH30 |
| External Buzzer | OT-BZ20 |
| Customer Display | DM-D30 |
| Wireless USB Adapter | OT-WL06 |

For additional connectivity options, please contact your Epson representative.



1 Only works with iOS devices. | 2 Feature available for iOS devices and Android devices running Android 10 or later. | 3 Epson's statements about reliability levels are only estimates based on normal use of the printer using tested media only. See www.epson.com/testedmedia for more information on Tested Media. These reliability statements are not warranties of the media or Epson's printers, and the only warranties for printers are the limited warranty statements for each printer. | 4 Paper savings depend on the text and graphics printed on the receipt. | 5 NFC tag requires use of a device that includes an NFC reader, and may require additional software. | 6 For convenient and reasonable recycling options, visit www.epson.com/recycle | 7 SmartWay is an innovative partnership of the U.S. Environmental Protection Agency that reduces greenhouse gases and other air pollutants and improves fuel efficiency.

See the latest innovations from Epson Business Solutions at www.epson.com/forbusiness

Better Products for a Better Future[™]
eco.epson.com



Epson America, Inc.
 3840 Kilroy Airport Way, Long Beach, CA 90806

Epson Canada Limited
 185 Renfrew Drive, Markham, Ontario L3R 6G3

www.epson.com
www.epson.ca

Specifications and terms are subject to change without notice. EPSON is a registered trademark, EPSON Exceed Your Vision is a registered logomark and Better Products for a Better Future is a trademark of Seiko Epson Corporation. OmniLink is a registered trademark and ePOS is a trademark of Epson America, Inc. Mac and OS X are trademarks of Apple Inc., registered in the U.S. and other countries. Android is a trademark of Google LLC. Windows is either a registered trademark or trademark of Microsoft Corporation in the United States and/or other countries. Wi-Fi[®] is a registered trademark of Wi-Fi Alliance[®]. SmartWay is a registered trademark of the U.S. Environmental Protection Agency. All other product and brand names are trademarks and/or registered trademarks of their respective companies. Epson disclaims any and all rights in these marks. Copyright 2020 Epson America, Inc. Com-SS-Oct-13 CPD-59195 6/20

