

imagePROGRAF TC-21



TC-21

KEY FEATURES



AFFORDABLE A1 PRINTING IN A COMPACT DESIGN

This compact 24" desktop printer delivers professional-quality results whilst fitting into small spaces. Easy to use, it's perfect for architectural drawings, retail posters, and educational materials. The standard Auto Sheet Feeder also supports flyers, labels, postcards, and envelopes*¹.



NEW FEATURES FOR ENHANCED IMPACT

The TC-21's new Minimal Margin*² Printing allows borderless top and bottom printing and ultra-slim (approximately 0.5mm) side margins, maximizing printable space. Canon's free, web-based PosterArtist software also makes it easy to design professional posters and flyers for various business needs.



SWITCH PRINTING ROLL AND CUT SHEET

Roll paper and cut sheets can be loaded simultaneously, with automatic switching between them via printer driver or application settings. For efficient continuous printing of flyers and documents, the Auto Sheet Feeder holds up to 100 A4 sheets or 50 A3 sheets of plain paper.

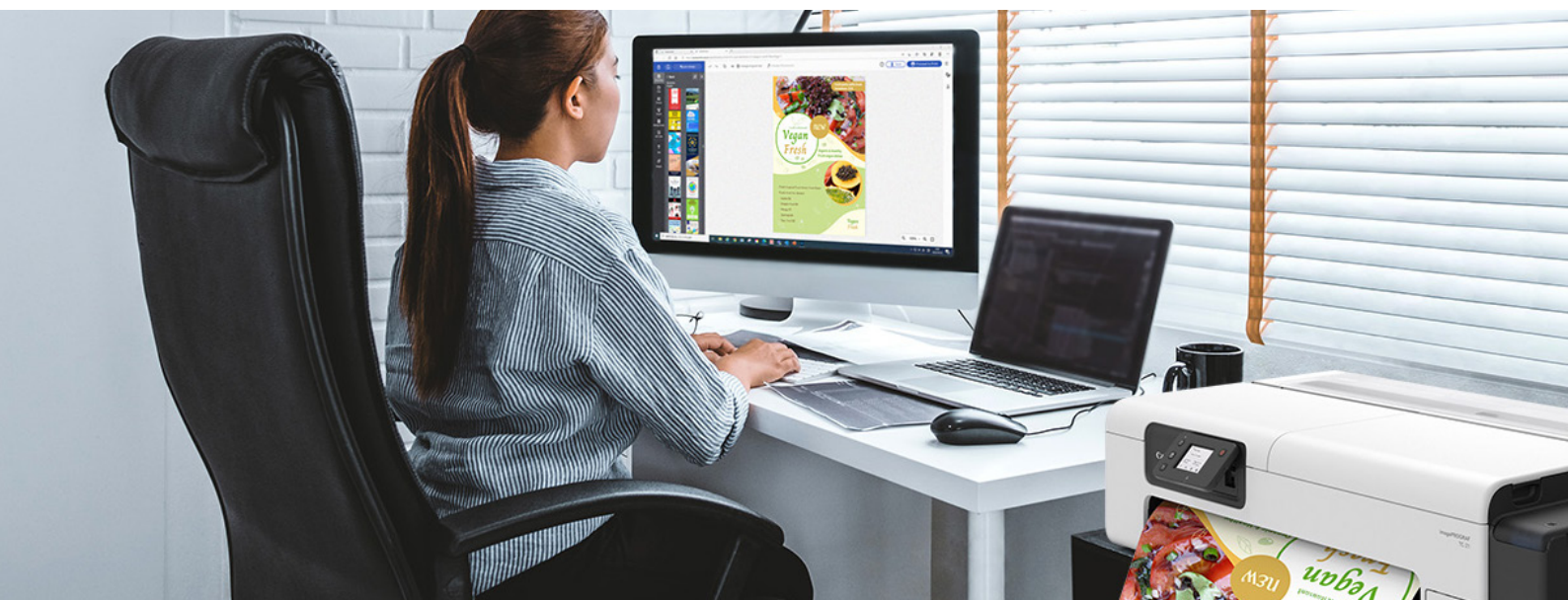


EASY INK REFILLING OF LARGE-CAPACITY TANKS

Four-colour pigment inks (BK/C/M/Y) combined with advanced image processing deliver vibrant, high-quality prints. The printer houses large 70ml ink bottles, matching the replacement size and providing a total of 280ml of ink to start printing right away.

*¹ Supported paper size are in the spec table in page 4

*² Supported roll paper widths are 24 inch, 18 inch, 17 inch, A1, A2, A3, B2, B3. The left and right margins are approximately 0.5 mm and no top and bottom margin. There may be a margin of approximately 0.1~0.8 mm depending on printing conditions and the printing environment. Backlit film, tracing paper and translucent matte film are not supported.

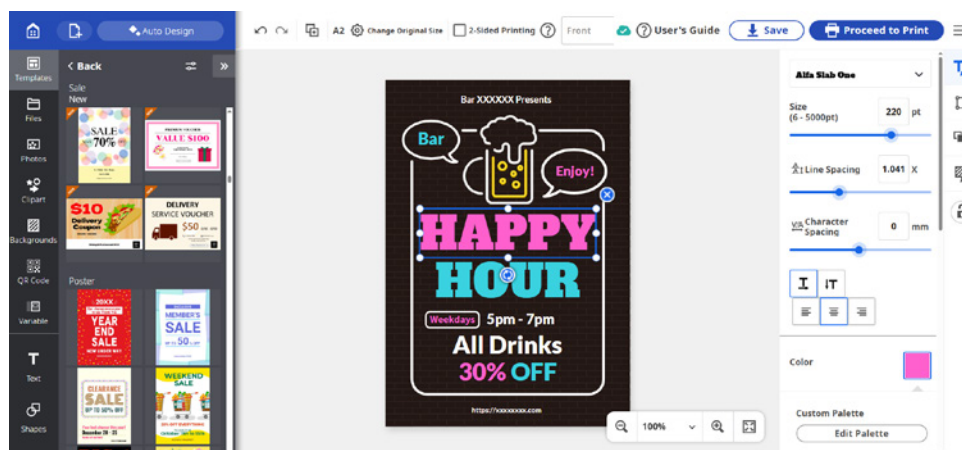


Canon

POWERFUL WORKFLOW SOLUTIONS

PosterArtist

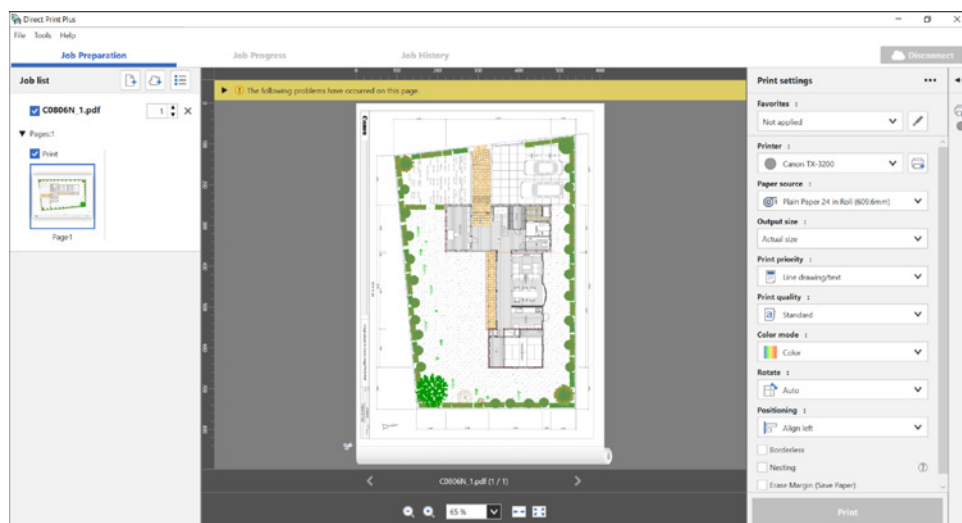
Creating posters, banners and flyers has never been easier. This intuitively creative web-based software boasts auto-generated design templates, access to millions of stock photos, and intuitive editing – all free of charge.



SCAN TO
WATCH THE
VIDEO

Direct Print Plus

The Direct Print Plus software allows you to simply drag and drop to process a large number of prints quickly helping you stream line your workflow for on demand printing. In addition, you can set-up shortcuts folders on your desktop by clicking the Shortcut Print feature with a variety of customised settings, allowing for multiple jobs to be run with ease.



SCAN TO
WATCH THE
VIDEO

imagePROGRAF TC-21

SPECIFICATIONS

Print Head

PF-08 (User replacement)

Number of Nozzles in Printhead

BK: 1,280 nozzles
C/M/Y: 1,024 nozzles

Ink Type

Pigment: Cyan (C), Magenta (M), Yellow (Y), Black (BK)

Ink Tank

Shipped with Printer: 280ml total (C, M, Y, BK 70ml each)
Replacement: C, M, Y, BK : PFI-050 (70ml)

Printer RAM

1GB

Media Feed

Media Feed: 1 Roll, Top-loading, Front output
Cut sheet: Top-loading, Front Output

Media Width

Roll Paper:	
ISO	A3, A2, A2+, A1
JIS	B3, B2
ARCH	18", 24"
Others	17"
Cut Sheet:	
ISO	A6, A5, A4, A3, B4
DIN	C4
JIS	B6, B5, B4
ANSI	Ledger (11" x 17"), Letter (8.5" x 11"), Legal (8.5" x 14"), Foolscap, Executive
ARCH	9" x 12"(ARCH A)
Photo	10" x 12", 10" x 15", 8" x 10", 7" x 10", 5" x 7", 4" x 6"(KG), 2L, L
Envelope	Envelope Com 10, Envelope DL, Nagagata 3-go and 4-go, Yougata 4-go and 6-go, Envelope C5, Envelope Monarch
Others	B-Oficio, M-Oficio, User-defined size (Width: 89mm -297mm, Length: 127mm -1200mm)

Media Cutter

Automatic horizontal cutting (Rotary Cutter)

Media Thickness

0.08 to 0.28mm

Media Core Sizes

2" core only

Maximum Roll Outer Diameter

110mm or less

Printing Solution

Canon PRINT(iOS/Android), Canon Print Service(Android), Airprint, Mopria®

Printing Software Utilities

Direct Print Plus, Free Layout Plus, imagePROGRAF Printer Driver for Windows®/ Mac®, Media Configuration Tool, Canon PRINT, Cloud service, PosterArtist Web

Operating System

Windows 11, Windows 10, Windows 8.1, Windows 7, Windows Server 2025-2008 R2, macOS v15-11.7.10

Print Language

SGRaster

Interface

Hi-Speed USB: Full Speed (12 Mbit/sec), High Speed (480 Mbit/sec), Bulk transfer
Ethernet (Built in): IEEE802.3u(100BASE-TX)/IEEE802.3(10BASE-T)
Wireless LAN: IEEE 802.11n/g/b/a/ac

Power Supply

AC 100–240V (50 – 60 Hz)

Power Consumption

Power Consumption(using wired LAN): Approx. 28W
Standby(using wired LAN): Approx. 1.7W
Power Off: Approx. 0.07W

Operational Environment

Temperature: 15° – 30° C
Relative Humidity: 10 – 80%
(Non Condensation)

Printer Dimensions (W x D x H) and Weight

Without stand: 968 x 533 x 245mm, 32kg
With stand (basket opened): 968 x 868 x 874mm, 43kg

Package Dimensions (W x D x H) and Weight

Printer Package: 1120 x 726 x 406 mm, 45kg
Stand(SD-24): 1058 x 826 x 270 mm, 20kg
Desktop Basket(BU-06): 798 x 301 x 111mm, 2kg

Options

Stand: SD-24
Desktop Basket: BU-06

Consumables (User Replaceable)

Ink Tank: PFI-050 (70ml)
Maintenance Cartridge: MC-32
Print Head: PF-08

Wireless printing requires a working network with wireless 802.11b/g or 802.11n capability. Wireless performance may vary based on terrain and distance between the printer and wireless network clients.

Quoted top speeds may be limited by the effective bandwidth of the USB 2 and is not guaranteed for all media types.

Mopria® is registered and/or unregistered trademarks and service marks of Mopria Alliance, Inc. in the United States and other countries. Unauthorized use is strictly prohibited. Mobile printing may be accomplished by using the Mopria Print Service app in the Google Play Store. Visit www.mopria.org for details.



Canon Australia Pty Ltd
1800 444 199
canon.com.au/business



Canon New Zealand Ltd
0800 222 666
canon.co.nz/business

