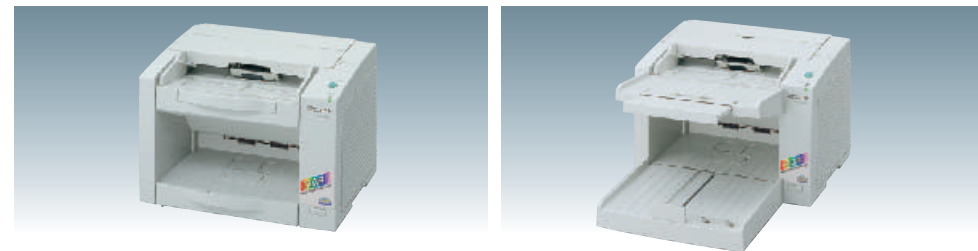
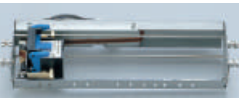


Panasonic


KV-S2026C 

KV-S2046C 



		KV-S2026C		KV-S2046C	
Scanning face		Duplex			
Scanning method		CIS (Contact-type colour image sensor) Front and Back sides Background: Black sensor roller			
Scanning speed*1 A4 size portrait Paper feed test by service utility	Binary 200 dpi	Simplex 23 ppm Duplex 40 ipm	Simplex 41 ppm Duplex 72 ipm		
	Colour 150 dpi	Simplex 10 ppm Duplex 16 ipm	Simplex 18 ppm Duplex 32 ipm		
Resolution		100-600 dpi (10 dpi step) Optical: 600 dpi (Main and Sub scanning directions)			
Output		Binary mode, Gray Scale mode (4/8 bit), 24 bit colour			
Binary Mode Halftone		Dither, Error diffusion			
Image control		Image emphasis (5 steps), Gamma correction, *Dynamic Threshold, *Automatic Separation, *Noise Reduction, *De-skew, *Cropping, *Mirror Image, *Mono-chrome Reversing, *Note: Executed by driver software or RTIV™.			
Other function		Patch code detection (Kodak patch 2, 3, T) Note: 1 patch per side. Executed only by ISIS® driver.			
Paper	Size	50.8 x 70 mm (2.0 x 2.8 in.) to 216 x 356 mm (8.5 x 14 in.)			
	Thickness	Single paper feeding: 0.05 to 0.15 mm (2.0 to 5.9 mils) Continuous paper feeding: 0.06 to 0.15 mm (2.36 to 5.9 mils) Note: 1 mil = 1/1000 in.			
	Weight	Single paper feeding: 40 to 127 g/m ² (10.7 to 33.9 lbs.) Continuous paper feeding: 50 to 127 g/m ² (13.3 to 33.9 lbs.) Note: 1 lbs = 3.75 g/m ²			
Interface (Transfer rate)		Dual port support Ultra SCSI (20 MB/sec.), 50 pin, USB 2.0			
Feed tray capacity		120 sheets [64 g/m ² (17 lbs.)], 100 sheets [75 g/m ² (20 lbs.)]			
Unit	External dimensions (Width x Depth x Height)	343 x 487 x 269 mm (13.5 x 19.2 x 10.6 in.) Note: When tray is pulled		343 x 487 x 239 mm (13.5 x 19.2 x 9.4 in.) Note: When tray is installed	
	Weight	8.5 kg (18.7 lbs.)		9.1 kg (20.1 lbs.)	
	Power requirement	AC100 - 120 V, 50/60 Hz	AC220 - 240 V, 50/60 Hz	AC100 - 120 V, 50/60 Hz	AC220 - 240 V, 50/60 Hz
Power consumption	Maximum (Scanning)	37 W	38 W	50 W	50 W
	Minimum (Standby)	17 W	19 W	18 W	19 W
	Sleep mode	6 W	8 W	6 W	8 W
Environment	Operating temperature and humidity	Temperature: 15 °C to 30 °C (59 °F to 86 °F) Humidity: 30 % to 80 % RH			
	Storage temperature and humidity	Temperature: 0 °C to 35 °C (32 °F to 95 °F) Humidity: 10 % to 80 % RH			
Accessories		<ul style="list-style-type: none"> •Power cord, •Roller cleaning paper, •CD-ROM(s) (Maintenance, Safety and Installation manual, Operating Instructions, RTIV™ Capture software, ISIS® driver, TWAIN driver, PIE manual, RTIV™ manual, User utility software, User utility manual), •Printed documents (Maintenance, Safety and Installation manual) 			
Consumables • Options		<ul style="list-style-type: none"> •Roller exchange kit (KV-SS022) •Roller cleaning paper (KV-SS03) White roller kit (KV-SS023) 	<ul style="list-style-type: none"> •Roller exchange kit (KV-SS022) •Roller cleaning paper (KV-SS03) •Ink cartridge (KV-SS021) White roller kit (KV-SS023) Pre-imprinter (KV-SS020) 		

Note *1: The scanning speed depends on the test environment. The scanning speed differs depending on the host computer operating environment or application.

KV-SS905C 
High Speed-Colour Scanner
For central colour document processing, the 95 ppm colour scanner, KV-SS905C is the natural choice.

As an ENERGY STAR® Partner, Panasonic has determined that this product meets the ENERGY STAR® guidelines for energy efficiency.
ENERGY STAR® and the ENERGY STAR® certification mark are registered US marks.
RTIV™ is a trademark of Matsushita Electric Industrial Co., Ltd.
ISIS® is a registered trademark of Pixel Translations, a division of Captiva Software Corporation.
PaperPort® is a registered trademark of ScanSoft, Inc.
All product names are trademarks or registered trademarks of their respective holders.
These products may be subject to export control regulations.

<http://panasonic.co.jp/pcc/products/en/scanner/>
<http://www.panasonic.co.jp/global/>

Design and Specifications are subject to change without notice. KME0203A/EU-S2026CULC-01 Printed in Japan

Panasonic®

Panasonic®

Colour Document Scanners

KV-S2026C 

KV-S2046C 



KV-S2046C

KV-S2026C

- ▶ Full Colour Duplex Scanning
- ▶ Advanced Panasonic Image Enhancement Technology with Colour Automatic Cropping and De-skew
- ▶ Dynamic Threshold Technology
- ▶ RTIV™ Reliable Throughput Imaging Viewer
- ▶ USB 2.0 and Ultra SCSI interface

